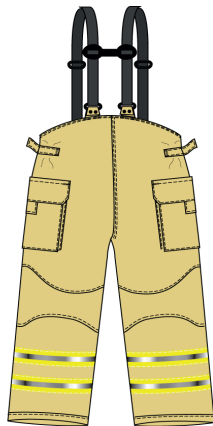
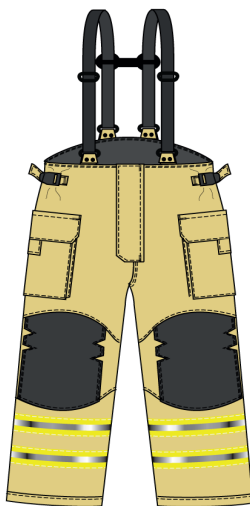




IND02

This fire suit has been designed for structural and external firefighting. This design provides the wearer with a unique combination of exceptional comfort and minimal bulk. The suit itself is manufactured using 206gms PBI, in conjunction with a PTFE membrane, ISOAIR/ Nomex Comfort liner and Stedshield reinforcement. This trousers are to be partnered with the IND01 fire tunic.



Composition

PBI Matrix 205gms

Size

S - 3XL

Inventory

Please Enquire

PRODUCT FEATURES

Over-trouser with centre front concealed zip fastening.

Covered with storm guard with velcro fastening.

Ergonomic legs to allow ease of movement and reduce bulk when knelt.

Two side cargo pockets with velcro fastening flaps.

Side waist adjusters to reduce waist for a comfortable fit without compromising airflow.

Increased back waist height to ensure full coverage to lumbar region.

Fully adjustable and detachable elastic braces.

H bar is also adjustable.

Two rows of 50mm reflective tape to lower legs.

Reinforced and padded knee area.

Notched to minimise bulk.

Back hem scalloped to reduce wear and tear.

CERTIFIED ACCORDING TO



EN469 L2



EN1149-5



EN13688